



CEEB Code: 910099
UCAS Centre Number: 43123
IB School number: 019016

AUDREY PEVERELLI
PRINCIPAL

LUCIANA LEITE AND MARIA EDUARDA SAWAYA
FOUNDING DIRECTORS

KARINE VAIRO
HIGH SCHOOL COORDINATOR

PEDRO FERNANDES
IB-DIPLOMA PROGRAMME COORDINATOR

LUCAS D'NILLO SOUSA
**COORDINATOR OF UNIVERSITY
AND CAREER COUNSELING**

BEACON CAMPUS
Rua Mergenthaler, 1131
Vila Leopoldina | São Paulo/SP
+55 11 3643-6900
ucc@beaconschool.com.br

BRAZIL

SCHOOL PROFILE 2025

Beacon is an **IB World School** that provides a bilingual education (English-Portuguese) and cherishes its **Brazilian heritage**. It emphasizes a warm, vibrant, and respectful atmosphere, nurturing academically rigorous, research-based learning. We aim to equip students to be **conscientious** citizens who embrace diversity and see it as a means to enhance individual development and societal progress.

OUR SCHOOL

Founded in 2010, Beacon is an IB Continuum World School that hosts approximately 1,400 students from Early Childhood through High School. It offers the IB Primary Years Programme from 2014, the IB Diploma Programme from 2021, and the IB Middle Years Programme as of 2024. **The inaugural graduating classes of 2023 and 2024 saw over 90% of their students accepted into higher education institutions.** Considering the Class of 2024, 54% of our students chose to study abroad, with the main destinations being the USA, Spain, Italy, the UK, the Netherlands, France, Switzerland, Canada, Germany, and Austria. The remaining 46% decided to stay in Brazil.

APPLICATIONS

56% of our applications were to US universities,
28% to Brazilian institutions, and the remaining
16% to various countries: UK, Netherlands, Italy,
Spain, Germany, France, and Canada.

We are a nonsectarian, independent, coeducational school with inclusive, non-selective admissions. We pride ourselves on encouraging all of our students to pursue both the IB Diploma and the Brazilian High School Certificate. Our students are housed on three campuses, with each age group in a specific location. *Our institution is not associated with other Beacon Schools.*

Teachers
202

**Total
Beacon Team**
496

**Campus Size
Construction**
20.722,19 m²
= 5,12 acres



ACCREDITATIONS
Ministry of Education - Brazil
International Baccalaureate

MEMBERSHIPS/AFFILIATIONS
International ACAC
AAIE - Association for the Advancement of International Education
AISH - Academy for International School Heads
UNESCO

OUR STUDENTS

Beacon School develops individuals with international mindedness who are aware of their role in the construction of a better and more peaceful world. We strive for our students to be inquirers, knowledgeable, thinkers, communicators, caring, principled, open-minded, risk-takers, balanced, and reflective.

Primary Years Programme		Middle Years Programme	Diploma Programme	Total Students
ECE	Elementary School	Middle School	High School	
389	563	354	140	1443

OUR ACADEMIC PROGRAM

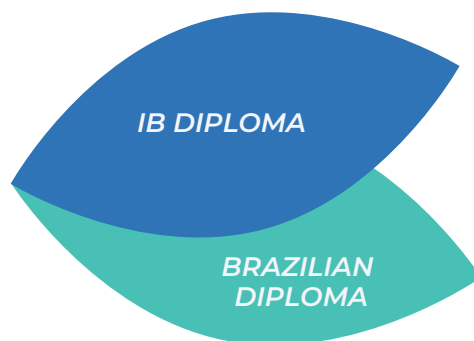
HIGH SCHOOL

YEAR 10		YEAR 11		YEAR 12	
1 st sem	2 nd sem	1 st sem	2 nd sem	1 st sem	2 nd sem
BRAZILIAN CURRICULUM					
IB DIPLOMA PROGRAMME				Final IBDP Exams	
UNIVERSITY AND CAREER COUNSELING					
EXPANDING HORIZONS PROGRAM National and International Experiences					
Student Agency and individualized Tutoring					

We adhere to the January-December academic calendar. As a result, our students commence the IB Diploma program earlier than most, in Year 10, and complete it at the onset of Year 12 (after the May Session and exams). In the second semester of Year 12 (August-December), students attend morning classes and dedicate their afternoons to working on their university applications and supplemental prep for local universities. Our students graduate every December.



GRADUATION REQUIREMENTS BY DIPLOMA TYPE



IB DIPLOMA	INTEGRATION	BRAZILIAN DIPLOMA
<p>2 years of at least 3 subjects in Standard Level (SL) and 3 subjects in Higher Level (HL) courses in the following areas:</p> <ul style="list-style-type: none"> Language and Literature Language Acquisition Individuals and Societies Sciences Mathematics The Arts or any subject from the other areas of knowledge <p>IB Core</p> <ul style="list-style-type: none"> Theory of Knowledge (TOK) The Extended Essay (EE) Creativity, Activity, and Service (CAS) 	<p>All Beacon students must take as a minimum requirement:</p> <ul style="list-style-type: none"> Portuguese SL Brazilian Social Studies BSS SL Biology SL Mathematics AA or AI SL English B SL 	<p>Content and skills related to the National Common Core (BNCC) are:</p> <ul style="list-style-type: none"> Physics Arts Chemistry Physical Education Social Emotional Learning <p>Electives - students must take at a least 2 different paths in each High school semester:</p> <ul style="list-style-type: none"> Studies in Language Individuals & Societies Sciences Studies in Mathematics

Our students undertake the IBDP and the Brazilian Curriculum at the same time, enhancing their academic rigor with over 1,300 yearly school hours. Those not attaining the full IB Diploma can earn IB Certificates per subject alongside the Brazilian High School Diploma, requiring a minimum 6.0/10 average grade and 75% attendance per subject.

GRADING SCALE

A	9,0 - 10,0
B	7,6 - 8,9
C	6,0 - 7,5
D	3,0 - 5,9
F	0 - 2,9

Our transcript score combines Activity-Based Assessments (ABAs) at 40% and four exam sessions at 60%, graded on a **0-10 scale**. Following a semester-based grading system in a **January-December academic calendar**, we **submit both the school transcript (Year 9 - Year 12; 1-10 scale) and the FINAL IB Diploma Scores to universities (scale 1-7), if necessary.**

We do not rank our students, and we do not calculate GPA.

IB | DP Subjects offered

1. Studies in Language & Literature

Portuguese SL/HL

2. Language Acquisition

English B SL/HL

Spanish B SL/HL

French ab initio SL

3. Individuals & Societies

Brazilian Social Studies BSS SL

History SL/HL

Business Management SL/HL

Economics SL/HL

Psychology SL/HL

Digital Society SL/HL

4. Science

Biology SL/HL

Chemistry SL/HL

5. Math

Math Analysis & Approaches

SL/HL

Math Applications and

Interpretation (SL/HL)

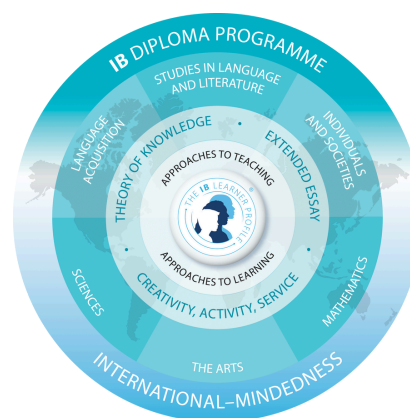
6. The Arts

Visual Arts SL/HL

Film SL

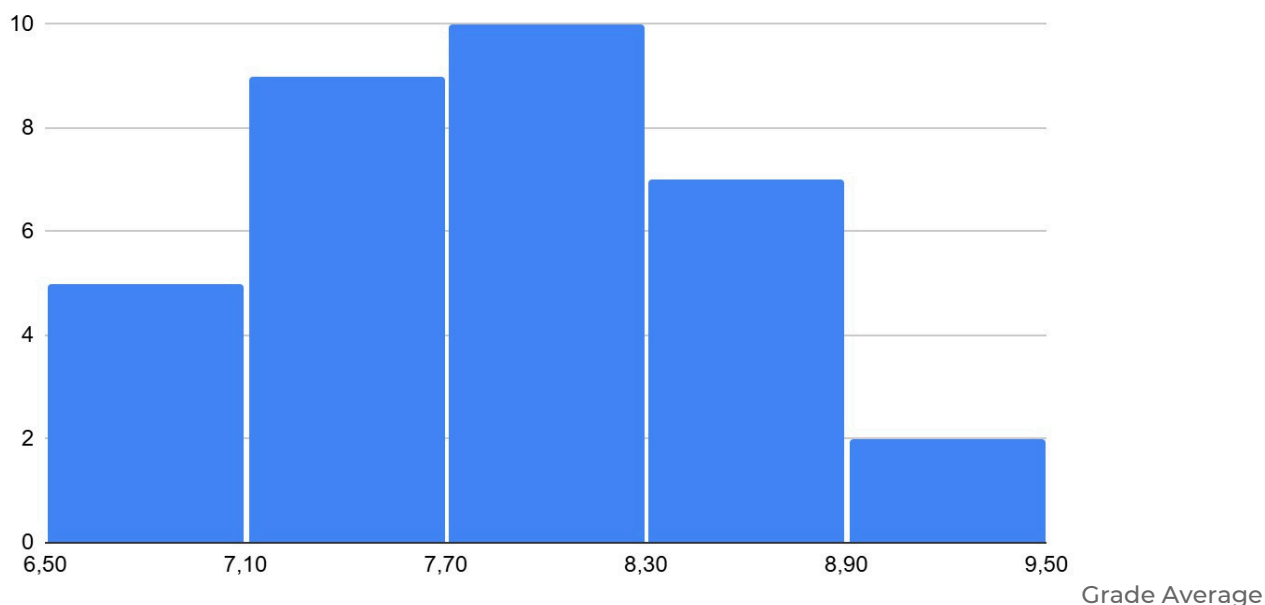
Or any subject from another group

IB Diploma Average		
Group	School pass rate	Global pass rate
Class of 2024	91.17%	80%
Class of 2023	95%	79%



School Transcript Grade distribution (Scale 1-10)

Number of Students (Class of 2025)



Note: Integrating both the IB and Brazilian curricula renders our school academically demanding. While the passing grade is 6,0, the majority of our students typically achieve scores ranging from 7,7 to 8,3.

EXPANDING STUDENTS EXPERIENCES

Beacon School extends learning beyond regular class time with optional programs and experiences. These include **Job Shadowing**, access to various **clubs** (such as MUN, Coding, Girl Up, Chess Club, Math Club, STEAM Club), **academic Olympiads**, and additional activities. The school hosts numerous events annually, including University fairs, Career Day, university lectures, and master classes, *with over 150 universities Higher education representatives visiting our campus each year*. Moreover, our Expanding Horizons program enables students to enhance their skills through summer programs both nationally and internationally.

Optional Activities					
Arts	Competitive Sports	Recreational Sports	STEM	Well-being & Sustainability	Extended Day
Circus	Basketball	Adventure Sports	Chess	Mindfulness & Yoga	Learning Through Play
Dance	Handball	Capoeira	Math Circle	Nutri Lab / Cooking	Time 4 Projects
Drama	Soccer	Fencing	Tech Lab		Supervised Study Time
Magic & Action	Volleyball	Judo		Science & Nature	
Music		Skateboarding			
Photography		Sports School			

Additional Highlights:

- Founding Director M. Eduarda Sawaya is the current president of Brazil's Private Schools Association.
- In 2025, Beacon earned a Top Honor Trophy in the Brazilian Math Olympiad (OBMEP), placing in the top 1% nationally.
- In 2024, Beacon was ranked among the top 4% of schools in Brazil in the Portuguese Language Olympiad (Y8–Y12).

CLASS OF 23-24 | ACCEPTANCES

AUSTRIA

Central European University

BRAZIL

Belas Artes

École Intuit Lab

Faculdade Ensino Einstein

Escola Superior de Artes Célia Helena

ESPM

FAAP

FEI

FGV - Fundação Getúlio Vargas

Ibmec

Inspira

Instituto Mauá de Tecnologia

Inteli

Istituto Europeo di Design

PUC-PR

PUC-SP

Santa Marcelina

São Camilo Medicina

São Leopoldo Mandic

Universidade Federal de Viçosa

Universidade de São Paulo - USP

Universidade Estadual de Campinas - Unicamp

Universidade Estadual Paulista - Unesp

Universidade Federal de São Carlos

Universidade Federal do Paraná

Universidade Presbiteriana Mackenzie

Universidade Tecnológica Federal do

Paraná -UTFPR

CANADA

University of British Columbia

University of Toronto

FRANCE

American University of Paris

EDHEC

ESCP

Sciences Po University

GERMANY

Bard College Berlin

ITALY

Luiss University

Polimoda

The American University of Rome

NETHERLANDS

Amsterdam University College

Erasmus University

Leiden University

Maastricht University

Radboud University

The Hague University of Applied Sciences

Tilburg University

University of Amsterdam

Zuyd University of Applied Sciences

SPAIN

Esade Barcelona

EU Business

IE University

IED Istituto Europeo di Design

Universidad Carlos III de Madrid

Universidad CEU San Pablo

University of Navarra

UK

Northumbria University Newcastle

Bangor University

King's College London

London School of Economics

Nottingham Trent University

Regents University London

UAL - University of the Arts London

University of Birmingham

University of Liverpool

University of Manchester

University of Reading

USA

Arizona State University

Artcenter College of Design

California College of the Arts

Columbia College Chicago

DePaul University

Emerson College

Florida International University

Fordham University

Gonzaga University

Hofstra University

Hult International Business School

Indiana University Bloomington

Loyola University Chicago

Lynn University

Maine College of Art

Maryland Institute College of Art

Michigan State University

New York Film Academy

New York University

Newcastle University

Northeastern University

The Pennsylvania State University

Pratt Institute

Purdue University

Rhode Island School of Design

Ringling College of Art and Design

Rochester Institute of Technology

Rose-Hulman Institute of Technology

San Diego State University

Savannah College of Art and Design

School of the Art Institute of Chicago

School of Visual Arts New York City

The New School (Parsons)

The University of Arizona

The University of Texas at Austin

University of California Davis

University of California San Diego

University of California Santa Barbara

University of Colorado Boulder

University of Denver

University of Florida

University of Illinois Chicago

University of Illinois Urbana-Champaign

University of Michigan - Ann Arbor

University of Missouri

University of North Florida

University of Pittsburgh

University of San Francisco

University of South Florida

University of Southern California

University of Tampa

University of Washington

University of Wisconsin-Madison

Washington State University

Students have enrolled at the universities highlighted in bold.